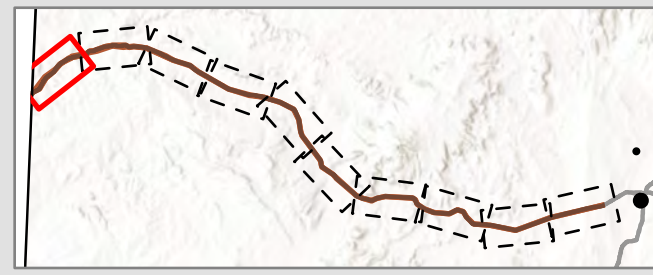
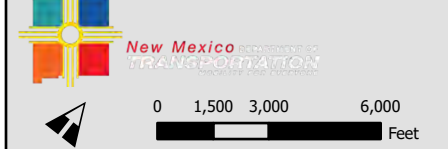


Appendix H

Utilities



Date: 5/12/2023
 Sources: NMDOT, City of Gallup, ABCWUA, City of Grants, Sacred Wind, NMGCO, Comcast, Horrocks, Parametrix
 PCS: NAD 1983 UTM Zone 13N
 Disclaimer: This product is for informational purposes and may not have been prepared for, or be suitable for legal, engineering, or surveying purposes.



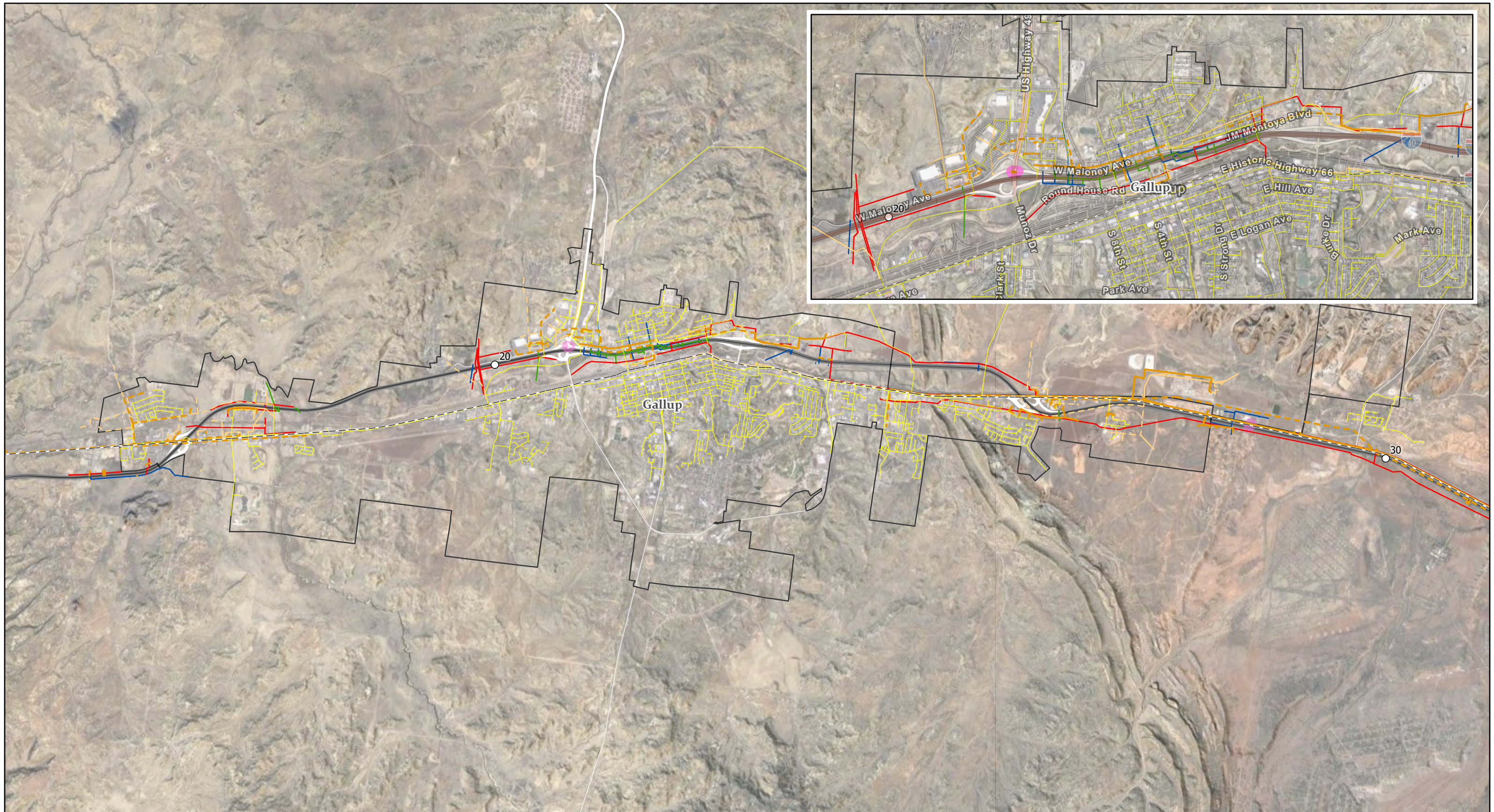
- I-40 Milepost
- I-40
- - - Alternate Route
- - - County Boundary
- City Limits

- Overhead Communications - Data
- - - Underground Communications - Data
- Overhead Communications - Phone

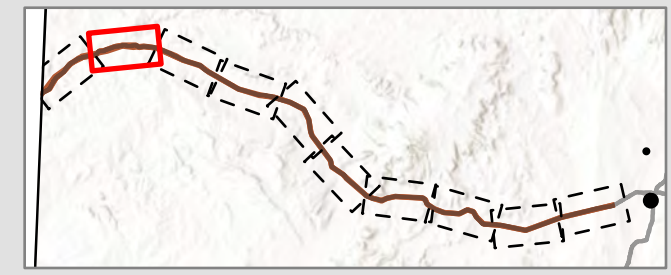
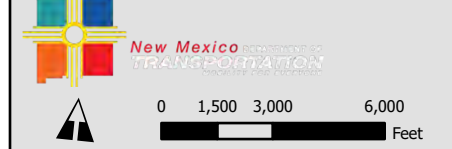
- - - Underground Communications - Phone
- Natural Gas
- Power - Overhead
- - - Power - Underground

- Wastewater
- Water
- NMDOT ITS Infrastructure

Exhibit 1 - Utilities
 Milepost 1 - 15



Date: 5/12/2023
 Sources: NMDOT, City of Gallup, ABCWUA, City of Grants, Sacred Wind, NMGCO, Comcast, Horrocks, Parametrix
 PCS: NAD 1983 UTM Zone 13N
 Disclaimer: This product is for informational purposes and may not have been prepared for, or be suitable for legal, engineering, or surveying purposes.

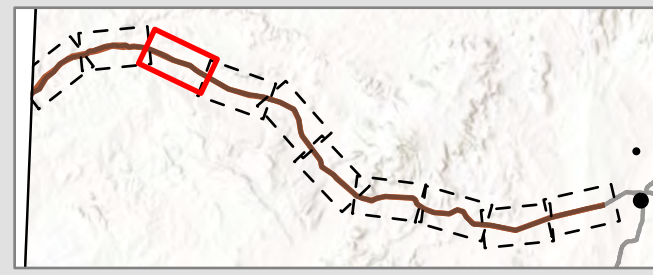
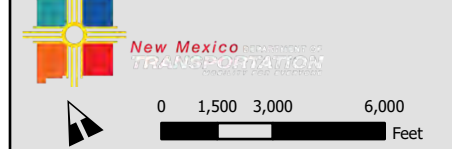


○ I-40 Milepost	— Overhead Communications - Data	— Overhead Communications - Phone	— Natural Gas	Exhibit 2 - Utilities Milepost 15 - 30
— I-40	— Underground Communications - Data	— Underground Communications - Phone	— Power - Overhead	
- - - Alternate Route	□ County Boundary	□ City Limits	— Wastewater	
			— Water	
			■ NMDOT ITS Infrastructure	

I-40 Corridor Study
Arizona to Albuquerque, MP 0 to 150 (CN 6101580)



Date: 5/12/2023
 Sources: NMDOT, City of Gallup, ABCWUA, City of Grants, Sacred Wind, NMGC, Comcast, Horrocks, Parametrix
 PCS: NAD 1983 UTM Zone 13N
 Disclaimer: This product is for informational purposes and may not have been prepared for, or be suitable for legal, engineering, or surveying purposes.



- I-40 Milepost
- I-40
- - - Alternate Route
- County Boundary
- City Limits

- Overhead Communications - Data
- - - Underground Communications - Data

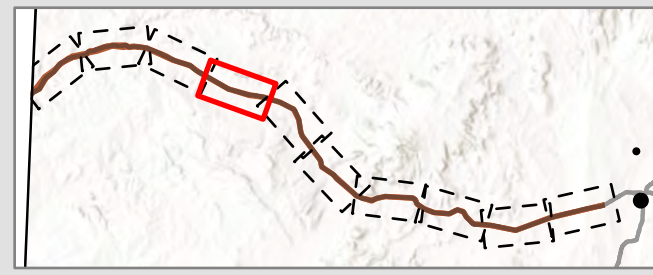
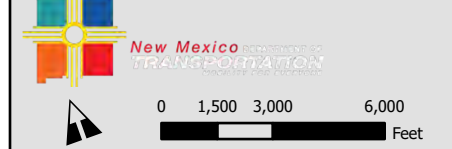
- Overhead Communications - Phone
- - - Underground Communications - Phone

- Natural Gas
- Power - Overhead
- - - Power - Underground
- NMDOT ITS Infrastructure

Exhibit 3 - Utilities
 Milepost 30 - 45



Date: 5/12/2023
 Sources: NMDOT, City of Gallup, ABCWUA, City of Grants, Sacred Wind, NMGC, Comcast, Horrocks, Parametrix
 PCS: NAD 1983 UTM Zone 13N
 Disclaimer: This product is for informational purposes and may not have been prepared for, or be suitable for legal, engineering, or surveying purposes.



- I-40 Milepost
- I-40
- - - Alternate Route
- County Boundary
- City Limits

- Overhead Communications - Data
- - - Underground Communications - Data

- Overhead Communications - Phone
- - - Underground Communications - Phone

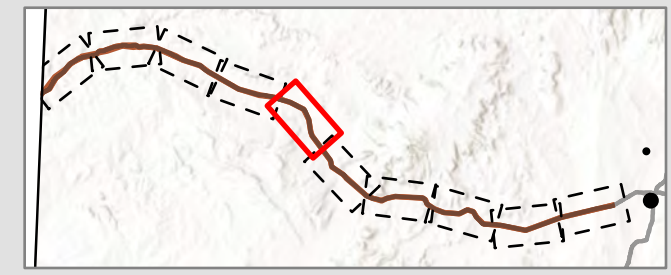
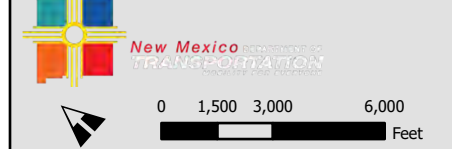
- Natural Gas
- Power - Overhead
- - - Power - Underground
- Water
- NMDOT ITS Infrastructure

Exhibit 4 - Utilities
 Milepost 45 - 60

I-40 Corridor Study
 Arizona to Albuquerque, MP 0 to 150 (CN 6101580)



Date: 5/12/2023
 Sources: NMDOT, City of Gallup, ABCWUA, City of Grants, Sacred Wind, NMGCO, Comcast, Horrocks, Parametrix
 PCS: NAD 1983 UTM Zone 13N
 Disclaimer: This product is for informational purposes and may not have been prepared for, or be suitable for legal, engineering, or surveying purposes.



- I-40 Milepost
- I-40
- - - Alternate Route
- - - County Boundary
- City Limits

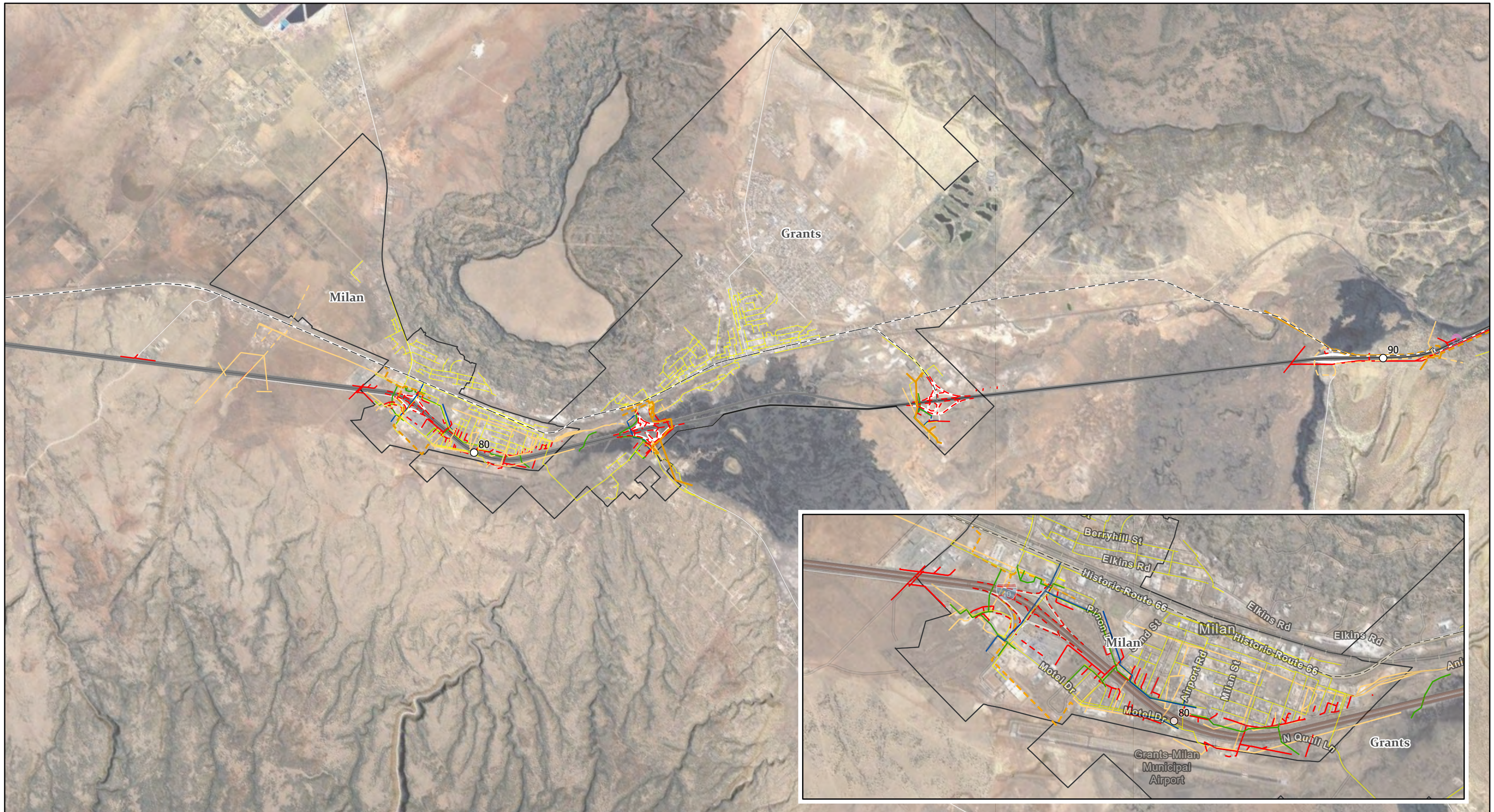
- Overhead Communications - Data
- - - Underground Communications - Data

- Overhead Communications - Phone
- - - Underground Communications - Phone

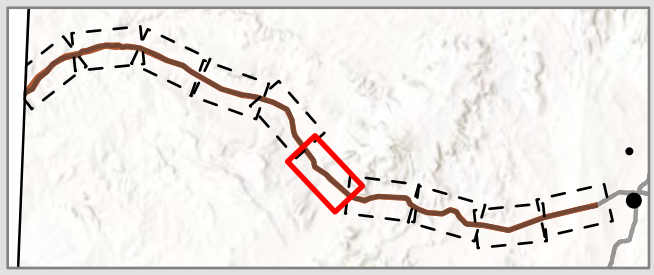
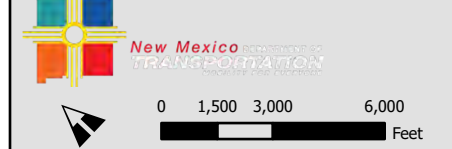
- Natural Gas
- Power - Overhead
- Water

Exhibit 5 - Utilities
 Milepost 60 - 75

I-40 Corridor Study
 Arizona to Albuquerque, MP 0 to 150 (CN 6101580)



Date: 5/12/2023
 Sources: NMDOT, City of Gallup, ABCWUA, City of Grants, Sacred Wind, NMGC, Comcast, Horrocks, Parametrix
 PCS: NAD 1983 UTM Zone 13N
 Disclaimer: This product is for informational purposes and may not have been prepared for, or be suitable for legal, engineering, or surveying purposes.



- I-40 Milepost
- I-40
- - - Alternate Route
- - - County Boundary
- City Limits

- Overhead Communications - Data
- Underground Communications - Data
- Overhead Communications - Phone
- Underground Communications - Phone
- Natural Gas
- Power - Overhead
- Power - Underground

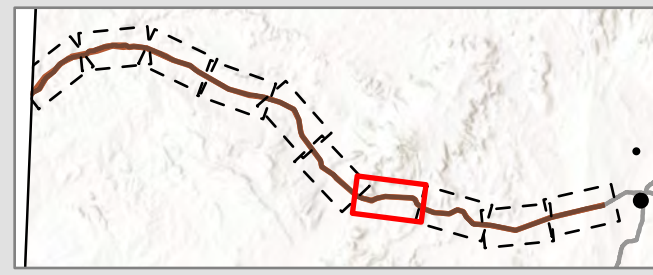
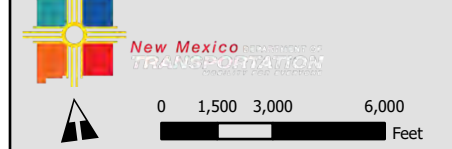
- Wastewater
- Water
- NMDOT ITS Infrastructure

Exhibit 6 - Utilities
 Milepost 75 - 90

I-40 Corridor Study
 Arizona to Albuquerque, MP 0 to 150 (CN 6101580)



Date: 5/12/2023
 Sources: NMDOT, City of Gallup, ABCWUA, City of Grants, Sacred Wind, NMGC, Comcast, Horrocks, Parametrix
 PCS: NAD 1983 UTM Zone 13N
 Disclaimer: This product is for informational purposes and may not have been prepared for, or be suitable for legal, engineering, or surveying purposes.



- I-40 Milepost
- I-40
- - - Alternate Route
- County Boundary
- City Limits

- Overhead Communications - Data
- - - Underground Communications - Data

- Overhead Communications - Phone
- - - Underground Communications - Phone

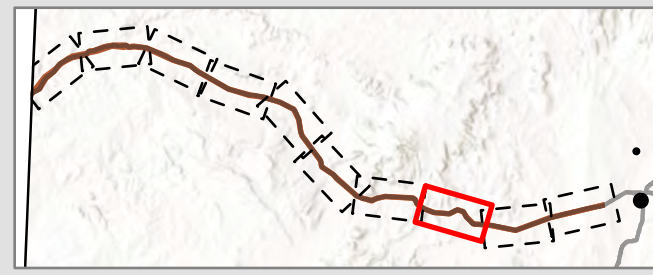
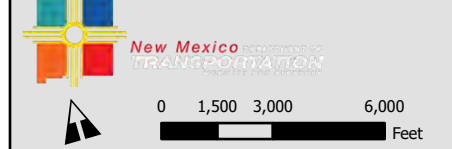
- Natural Gas
- Power - Overhead
- - - Power - Underground
- Wastewater
- NMDOT ITS Infrastructure

Exhibit 7 - Utilities
 Milepost 90 - 105

I-40 Corridor Study
 Arizona to Albuquerque, MP 0 to 150 (CN 6101580)



Date: 5/12/2023
 Sources: NMDOT, City of Gallup, ABCWUA, City of Grants, Sacred Wind, NMGCO, Comcast, Horrocks, Parametrix
 PCS: NAD 1983 UTM Zone 13N
 Disclaimer: This product is for informational purposes and may not have been prepared for, or be suitable for legal, engineering, or surveying purposes.



- I-40 Milepost
- I-40
- - - Alternate Route
- - - County Boundary
- City Limits

- Overhead Communications - Data
- - - Underground Communications - Data

- Overhead Communications - Phone
- - - Underground Communications - Phone

- Natural Gas
- Power - Overhead
- Wastewater

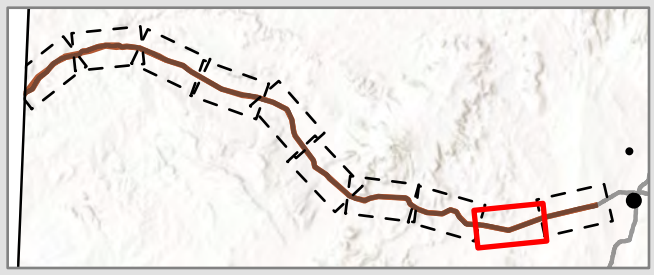
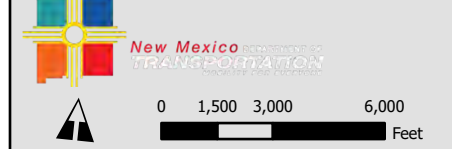
Exhibit 8 - Utilities
 Milepost 105 - 120

I-40 Corridor Study
 Arizona to Albuquerque, MP 0 to 150 (CN 6101580)



Note: NMDOT ITS fiber extends from MP 125 to MP 150.

Date: 5/12/2023
 Sources: NMDOT, City of Gallup, ABCWUA, City of Grants, Sacred Wind, NMGC, Comcast, Horrocks, Parametrix
 PCS: NAD 1983 UTM Zone 13N
 Disclaimer: This product is for informational purposes and may not have been prepared for, or be suitable for legal, engineering, or surveying purposes.



- I-40 Milepost
- I-40
- - - Alternate Route
- - - County Boundary
- City Limits

- Overhead Communications - Data
- - - Underground Communications - Data

- Overhead Communications - Phone
- - - Underground Communications - Phone

- Natural Gas
- Power - Overhead
- NMDOT ITS Infrastructure

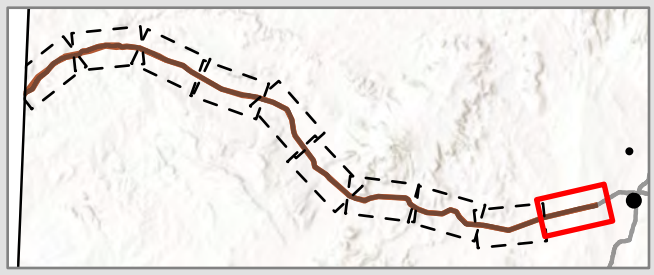
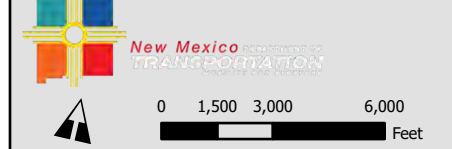
Exhibit 9 - Utilities Milepost 120 - 135

I-40 Corridor Study
 Arizona to Albuquerque, MP 0 to 150 (CN 6101580)



Note: NMDOT ITS fiber extends from MP 125 to MP 150.

Date: 5/12/2023
 Sources: NMDOT, City of Gallup, ABCWUA, City of Grants, Sacred Wind, NMGCO, Comcast, Horrocks, Parametrix
 PCS: NAD 1983 UTM Zone 13N
 Disclaimer: This product is for informational purposes and may not have been prepared for, or be suitable for legal, engineering, or surveying purposes.



- I-40 Milepost
- I-40
- - - Alternate Route
- County Boundary
- City Limits

- Overhead Communications - Data
- - - Underground Communications - Data
- Overhead Communications - Phone

- - - Underground Communications - Phone
- Natural Gas
- Power - Overhead
- - - Power - Underground

- Wastewater
- Water
- NMDOT ITS Infrastructure

Exhibit 10 - Utilities Milepost 135 - 150

I-40 Corridor Study
 Arizona to Albuquerque, MP 0 to 150 (CN 6101580)