



NMDOT TRANSPORTATION SAFETY SUMMIT

AUGUST 27, 2024
ALBUQUERQUE, NM



LAS CRUCES
SAFE
ROUTES
TO SCHOOL

LAS CRUCES SAFE ROUTES TO SCHOOL

2006 – PILOT PROGRAM

2009 – MESILLA ELEMENTARY

2013 – SCHOOL DISTRICT WIDE

2023 – FULL TIME SRTS COORDINATOR

2024 – 3 1/2 FULL TIME STAFF





THE 6 E'S

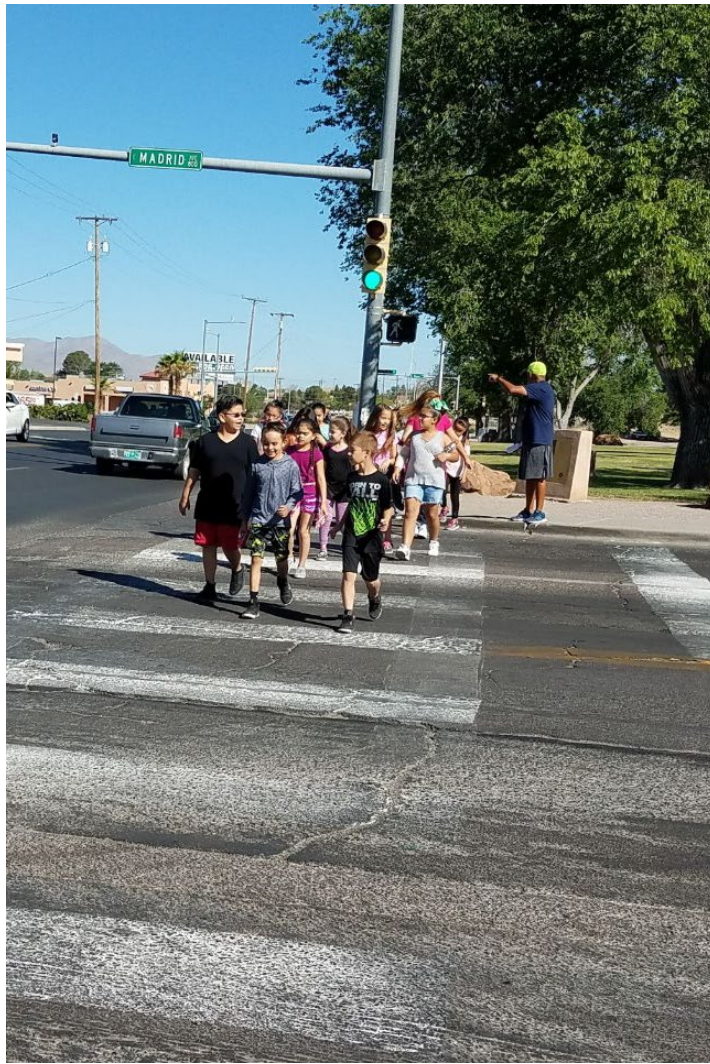
- EDUCATION
- ENCOURAGEMENT
- ENGAGEMENT (ENFORCEMENT)
- ENGINEERING
- EVALUATION
- EQUITY

CLASSROOM EDUCATION





ROADWAY SAFETY LESSONS



WALKING FIELD TRIPS



ENCOURAGEMENT

- WALKING SCHOOL BUSES
- WEEKLY EVENTS AT 20 SCHOOLS
- MONTHLY EVENTS AT 3 SCHOOLS
- **87 EVENTS A MONTH**

2023-2024 PROGRAM PARTICIPATION:

21,809 STUDENT WALKERS

846 STUDENT BIKERS

7,202 ADULTS

INTERNATIONAL WALK TO SCHOOL DAY

SEPTEMBER 17TH - 20TH 2024

100% OF ELEMENTARY SCHOOLS
PARTICIPATE EACH YEAR





TWO WHEEL TUESDAY



AFTER SCHOOL BIKE CLUBS

LEAGUE OF
AMERICAN
BICYCLISTS

SMART CYCLING FOR
ADULTS AND YOUTH

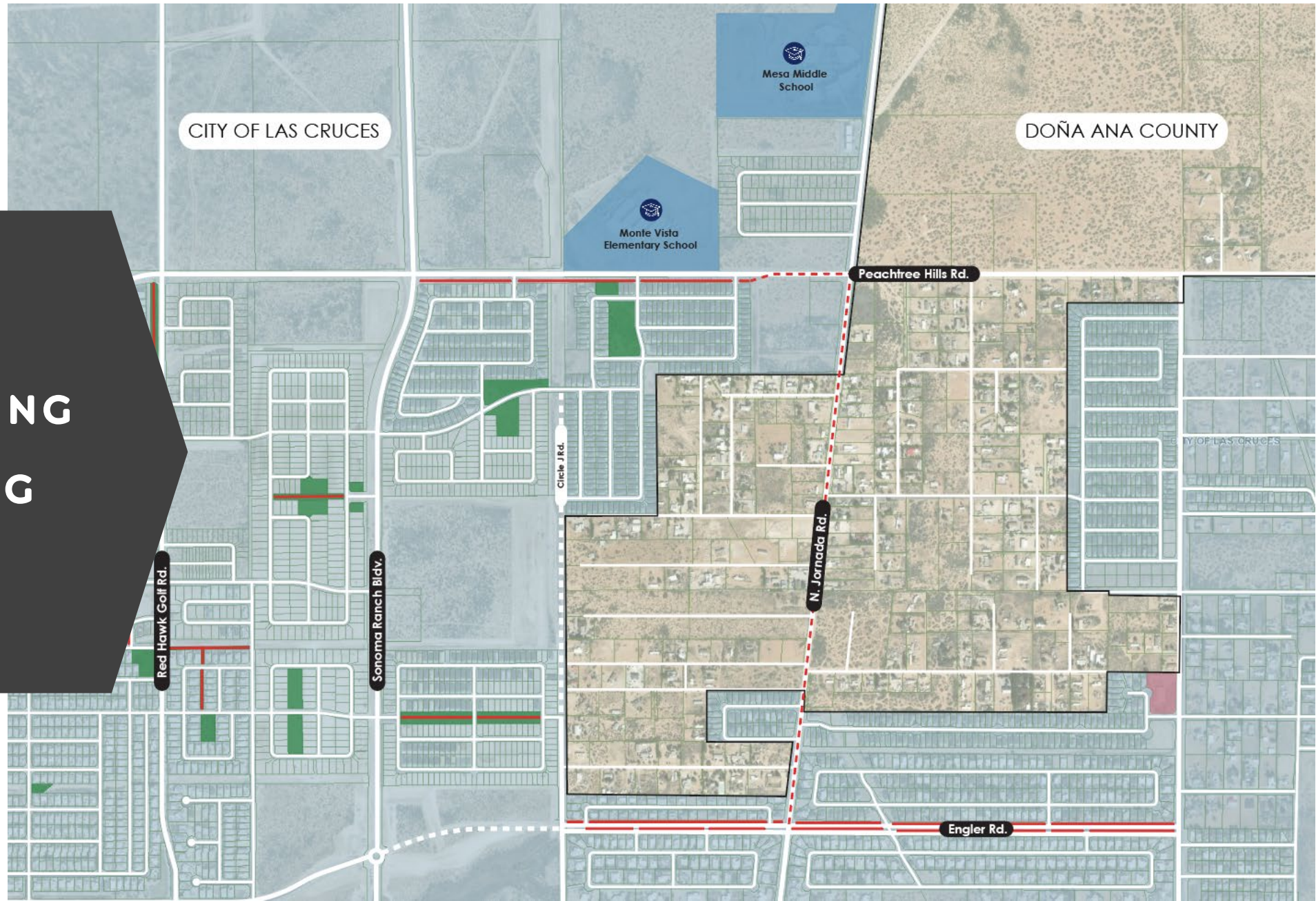




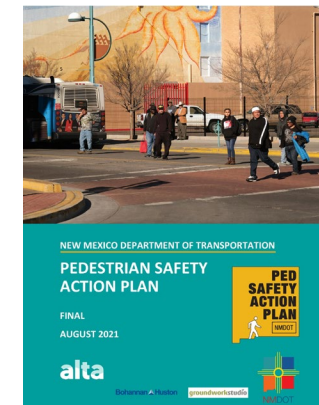
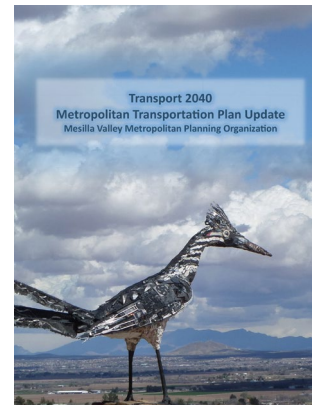
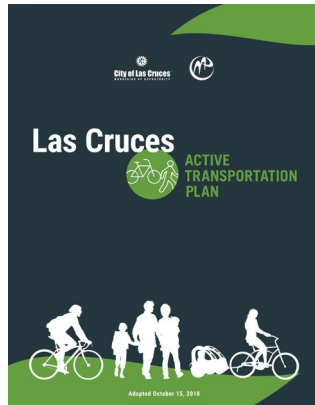
FAMILY BIKE FIESTA

- 208 KIDS ATTENDED
- 187 PARENTS/GUARDIANS
- 108 VOLUNTEERS
- 136 BIKES REPAIRED
- 152 HELMETS GIVEN AWAY

ENGINEERING AND PLANNING



SUPPORTING PLANS



STUDENT TRAVEL TALLIES

PARENT SURVEYS

Crime..... Yes No Not Sure

..... Yes No Not Sure

side box. If you make a mistake, fill the entire box, and then mark the correct box

How much does your child's school encourage or discourage walking and biking to/from school?

Encourages Neither Discourages Strongly Discourages

How do you feel about walking or biking to/from school for your child?

Fun Neutral Boring Very Boring

How healthy is walking or biking to/from school for your child?

Healthy Neutral Unhealthy Very Unhealthy

Mark a clear 'X' inside box. If you make a mistake, fill the entire box, and then mark the correct box

What is the highest grade or year of school you completed?

Through 8 (Elementary) College 1 to 3 years (Some college or technical school)

Through 11 (Some high school) College 4 years or more (College graduate)

GED (High school graduate) Prefer not to answer

Provide any additional comments below.

I believe this program provides kids with awareness of surroundings, environment, location. It also helps sense of direction and knowing/learning how to safely walk or bike to and from a destination.



WALK AUDITS

COALITION & PARTNERSHIPS

- LAS CRUCES POLICE DEPARTMENT
- LCPD CROSSING GUARDS
- LCPD CODES ENFORCEMENT
- DONA ANA COUNTY SHERIFF'S DEPT
- BORDER PATROL
- MESILLA MARSHALL'S OFFICE



FUNDING - NMDOT

ITEM	SRTS Funds/year
TAP Funding	\$271,138
LCPS Match	\$46,205
TOTAL Funding	\$317,343



THANK YOU!