

UNIVERSITY AVENUE (NM 101) MULTIMODAL PROJECT Final Design

Public Meeting
October 27, 2022



INTRODUCTIONS

- ▶ Gene Paulk – Interim District One Engineer
- ▶ Harold Love – Assistant District One Engineer Technical Support
- ▶ Aaron Chavarria – Assistant District One Engineer Construction
- ▶ Andreas Linnan – District One Technical Support
- ▶ Joshua Holguin – District One Environmental Lead
- ▶ Logan Brandenburg – Project Manager BHI
- ▶ Alvin Dominguez – BHI
- ▶ Albert Thomas – BHI
- ▶ Denise Aten - BHI

AGENDA

- ▶ Project Schedule
- ▶ Project Area Map
- ▶ Roadway
- ▶ Drainage
- ▶ Lighting
- ▶ Signals
- ▶ Railroad Crossing
- ▶ Construction Phasing & Detour Plan

PROJECT SCHEDULE

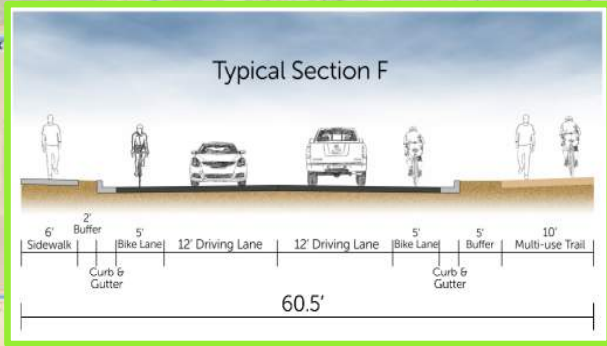
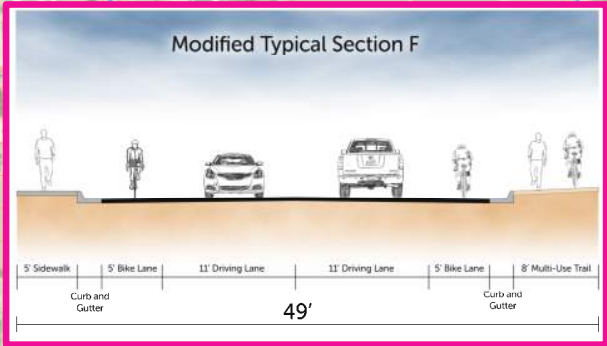
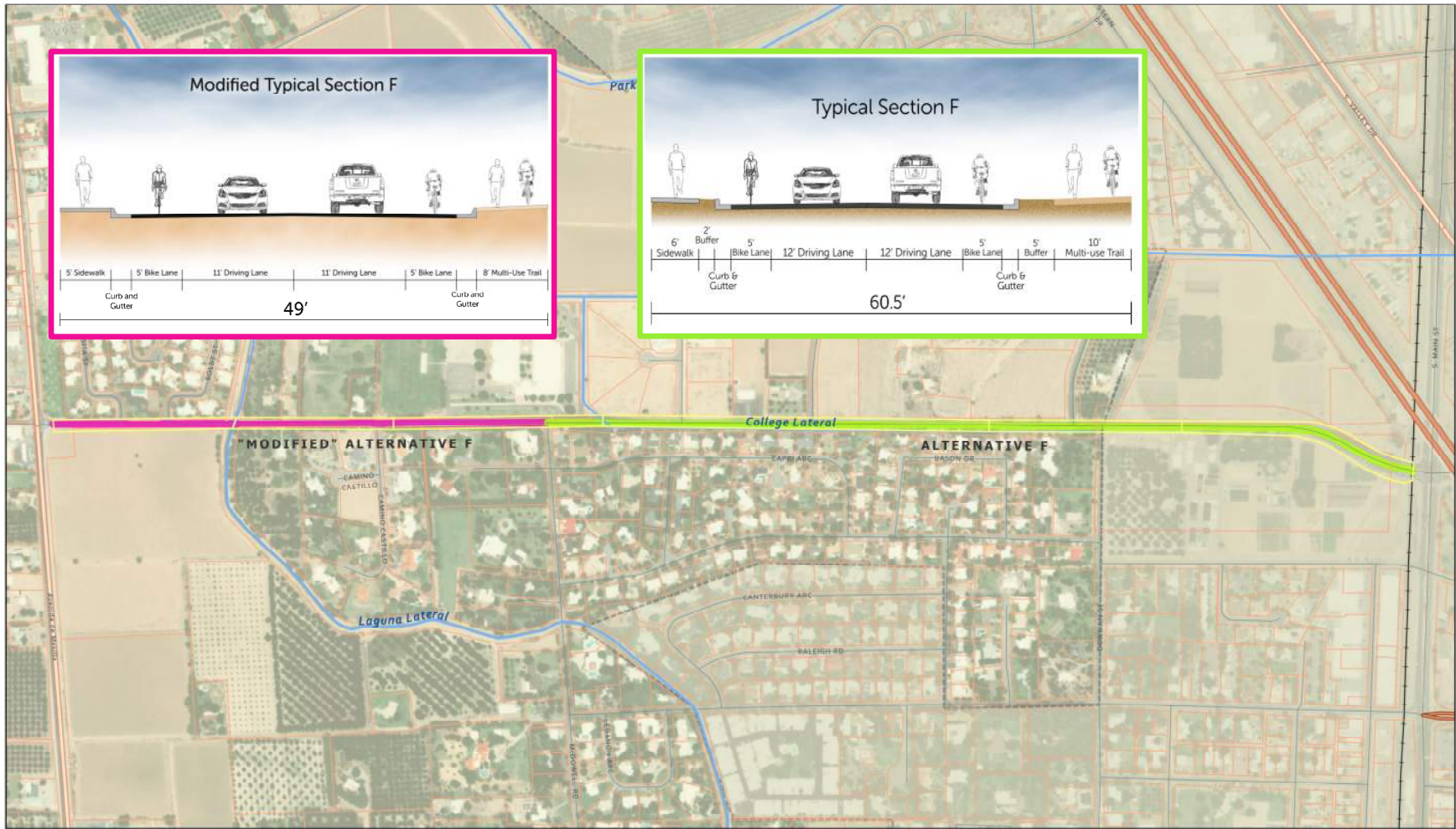
- ▶ Phase A Report - 2016
- ▶ Phase B Report - 2019
- ▶ 30% Plans – January 2020
- ▶ 60% Plans – February 2021
- ▶ 90% Plans – September 2022
- ▶ Public Meeting – October 2022
- ▶ Final Design – Summer 2023
- ▶ Construction Begins – Winter 2023/2024 (18 to 24 months)

PROJECT AREA MAP

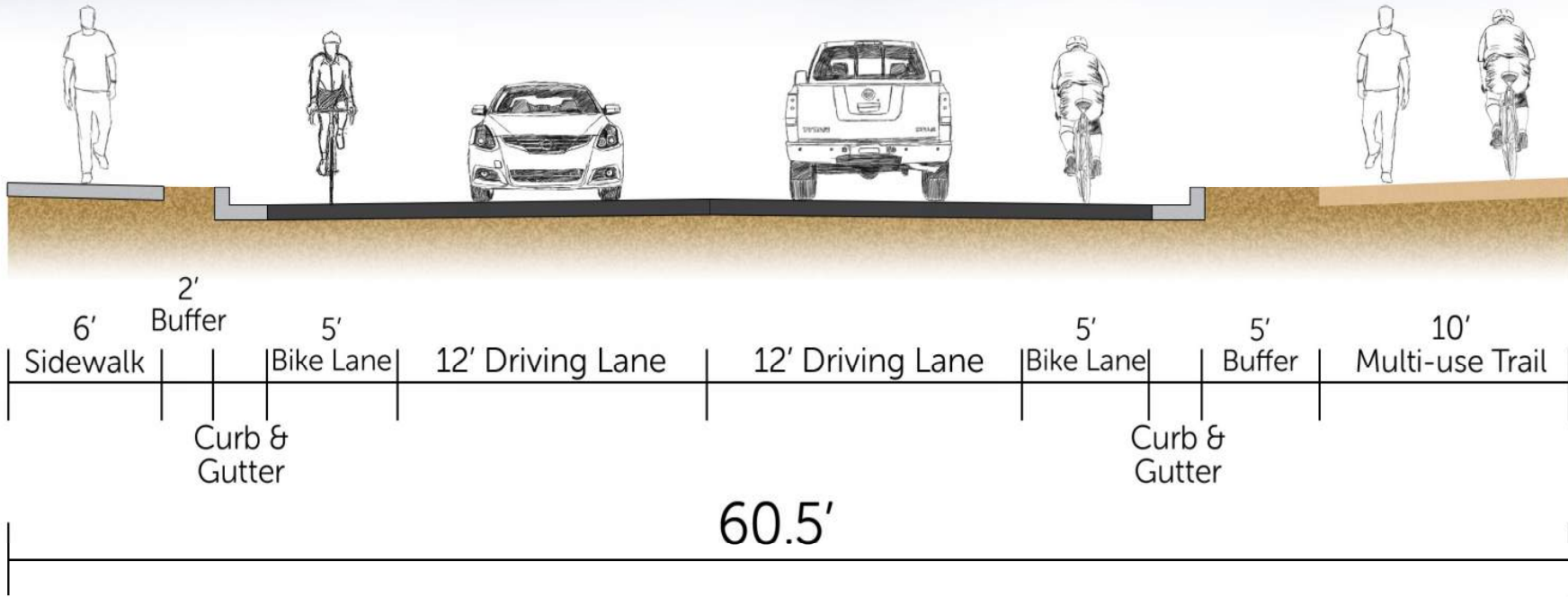


- University Ave
- Project Area
- City Limits

PROPOSED TYPICAL SECTION

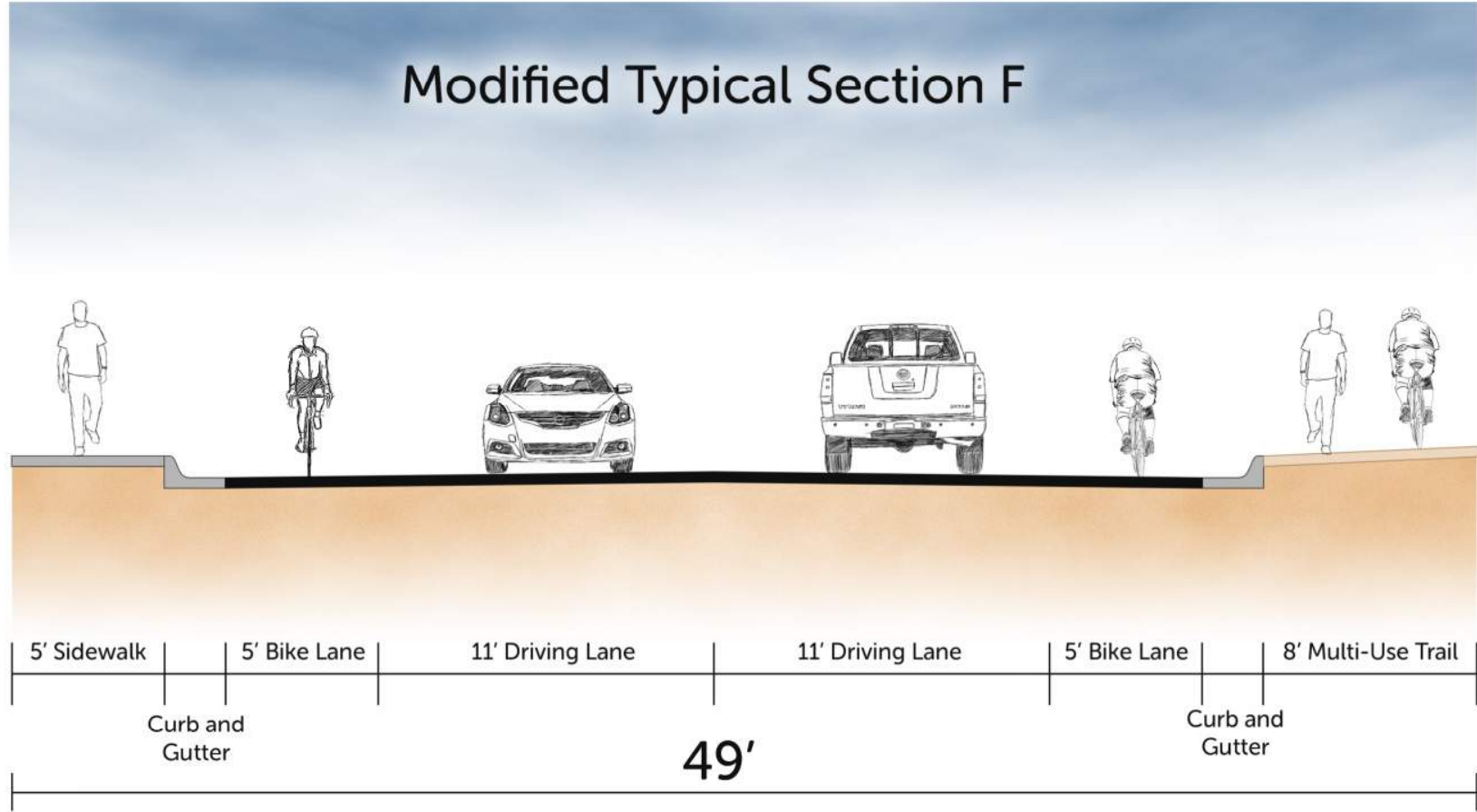


Typical Section F



TYPICAL SECTION F
(LOOKING EAST FROM OLD FARM RD)

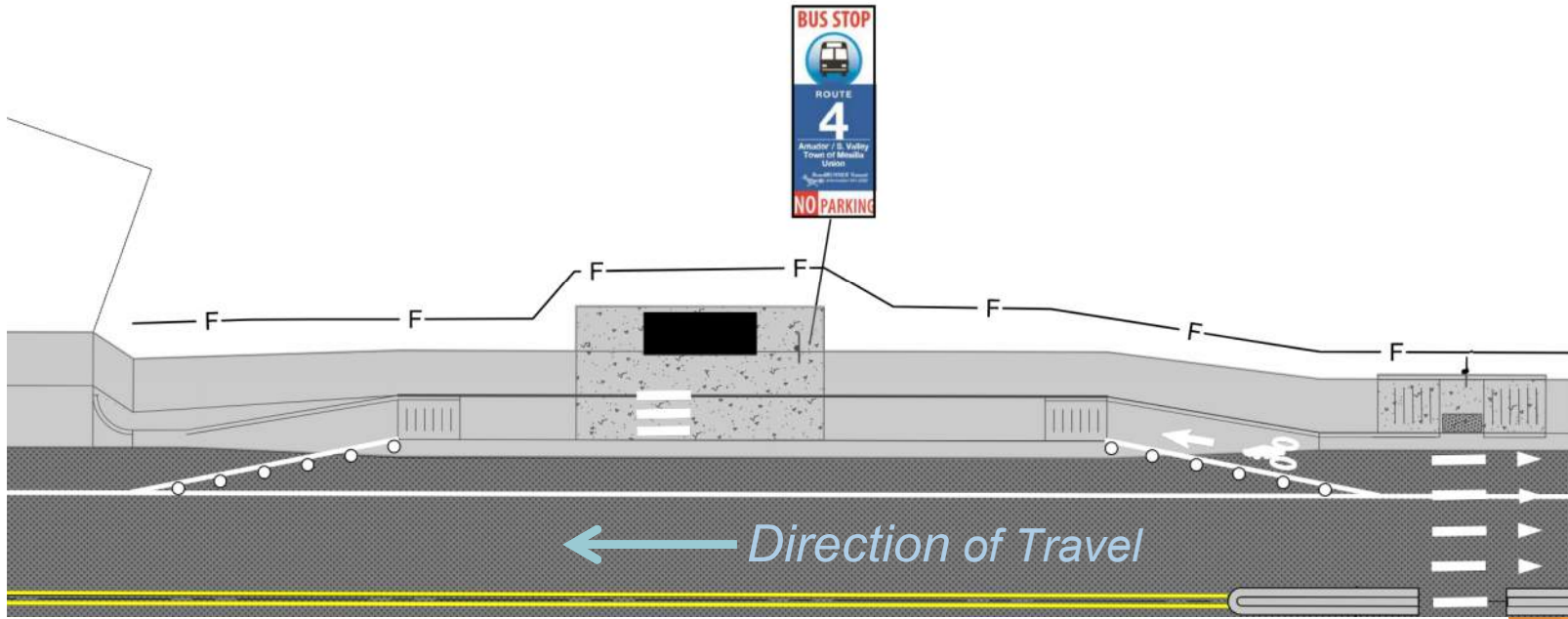




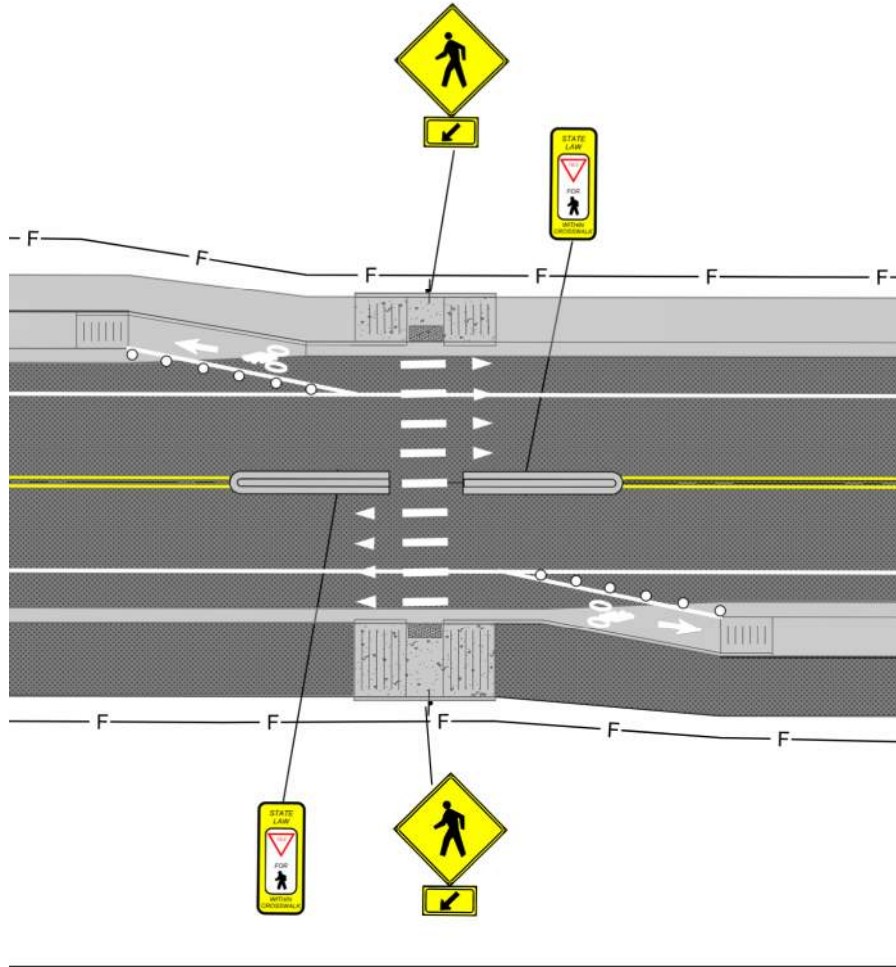
MODIFIED TYPICAL SECTION F
(LOOKING WEST FROM BOLDT ST)



BUS STOP DESIGN



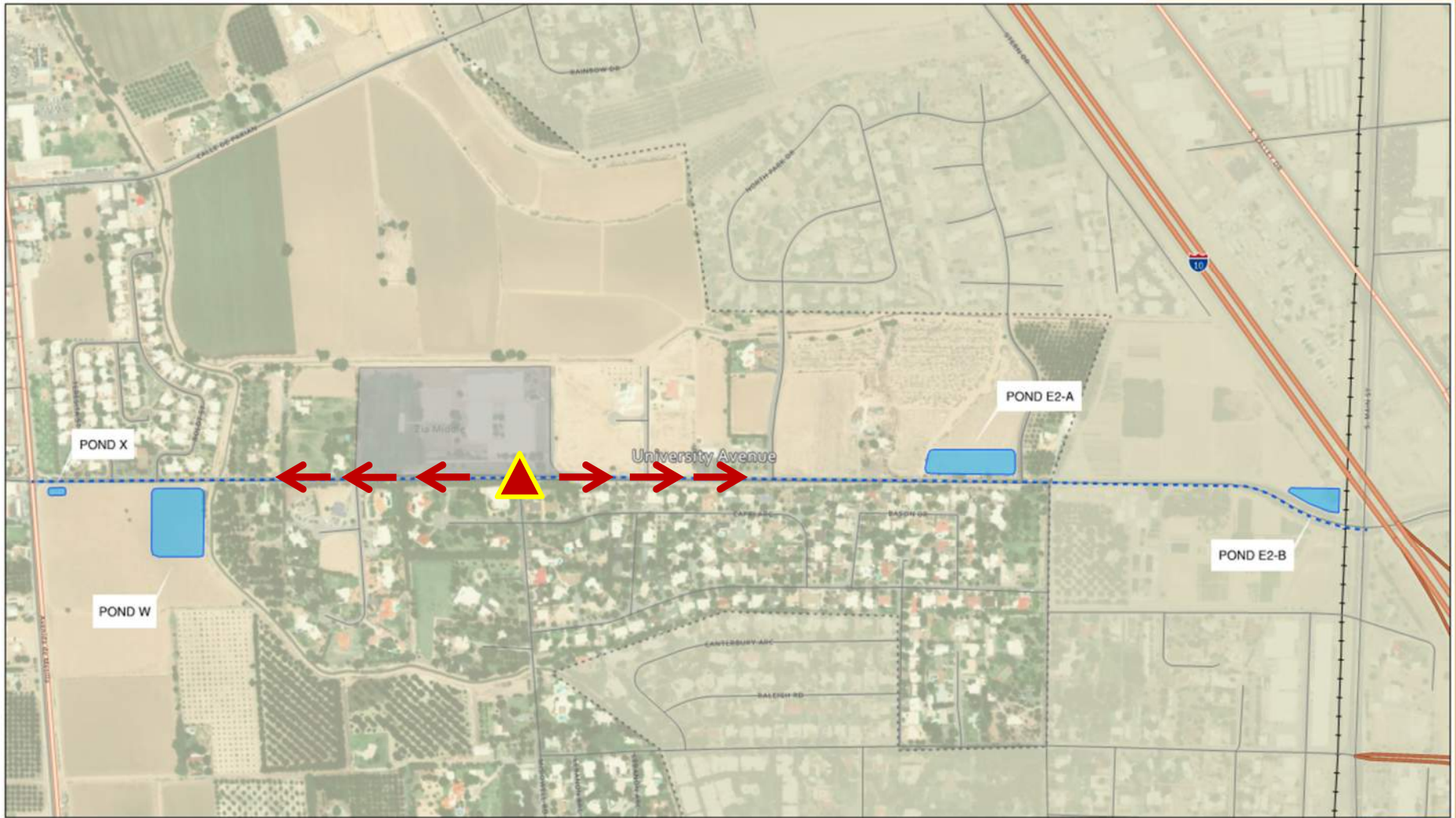
MID-BLOCK CROSSINGS



LOCATIONS

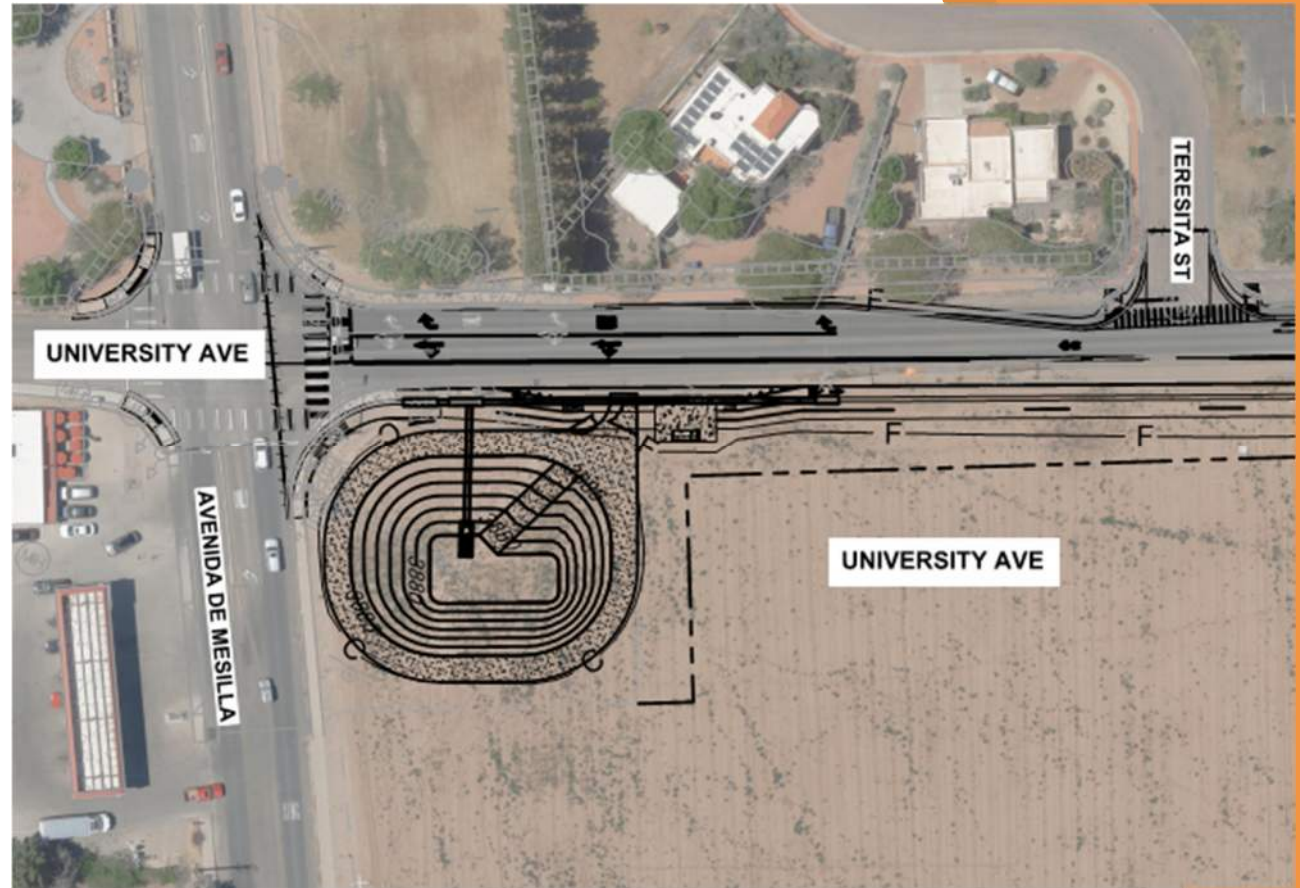
- ▶ Boldt St
- ▶ Camino Castillo
- ▶ McDowell Rd
- ▶ East of Bowman St

PROPOSED POND LOCATIONS



POND X

- ▶ 140' x 115'
- ▶ 0.34 acres
- ▶ 6' depth
- ▶ Perc. Rate:
3.15 min/in



LB0

Explain what ponds are for (retention) and touch on how long water will be sitting there. May need to find infiltration data to explain how long it will take to drain (will infiltrate more quickly with smaller storms)

Logan Brandenburg, 2022-10-19T17:03:06.065

LB1

Speak to the maintenance - we put in ramps to allow for easy access for maintenance vehicles to maintain it "on a regular basis"

Logan Brandenburg, 2022-10-19T17:04:28.987

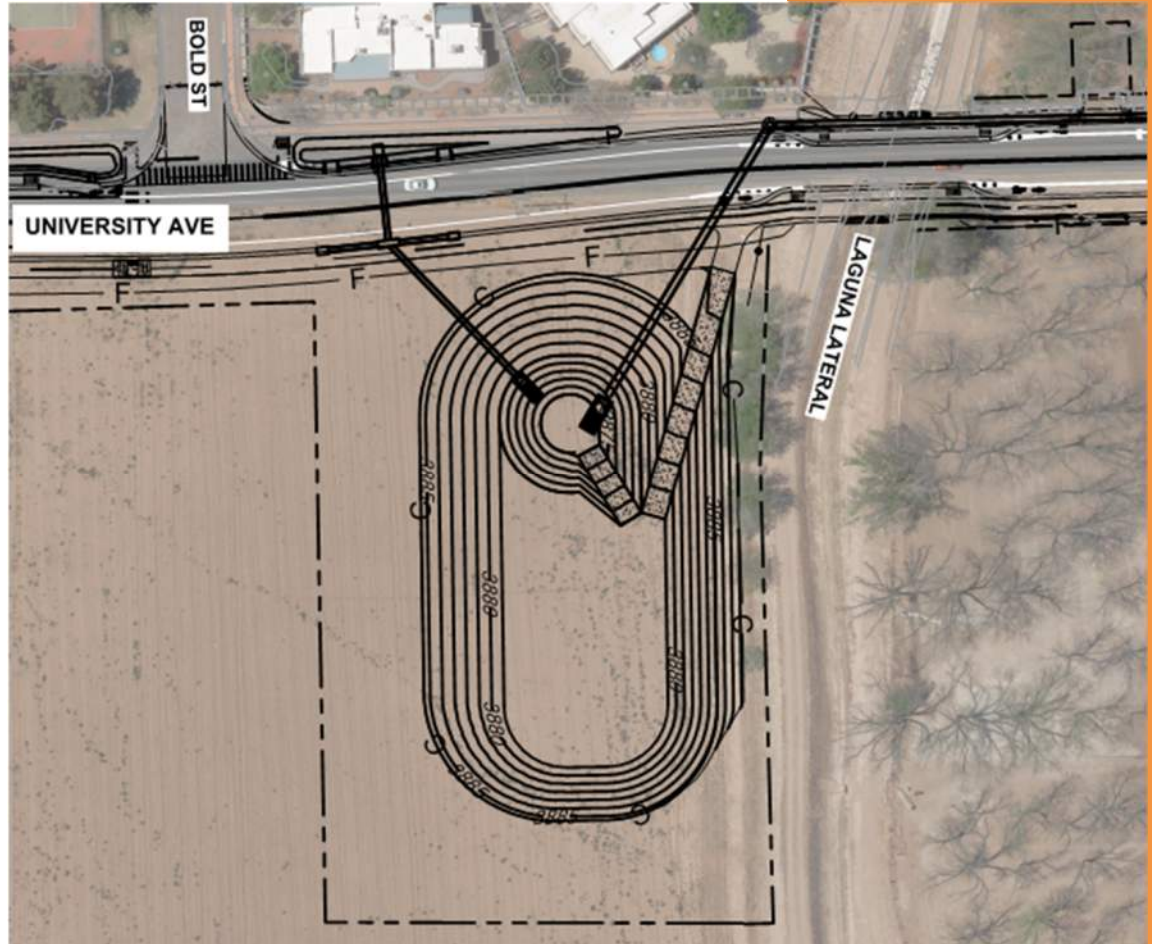
LB2

Mention that these ponds will be seeded once construction is complete to allow for native grasses to grow

Logan Brandenburg, 2022-10-19T17:05:10.467

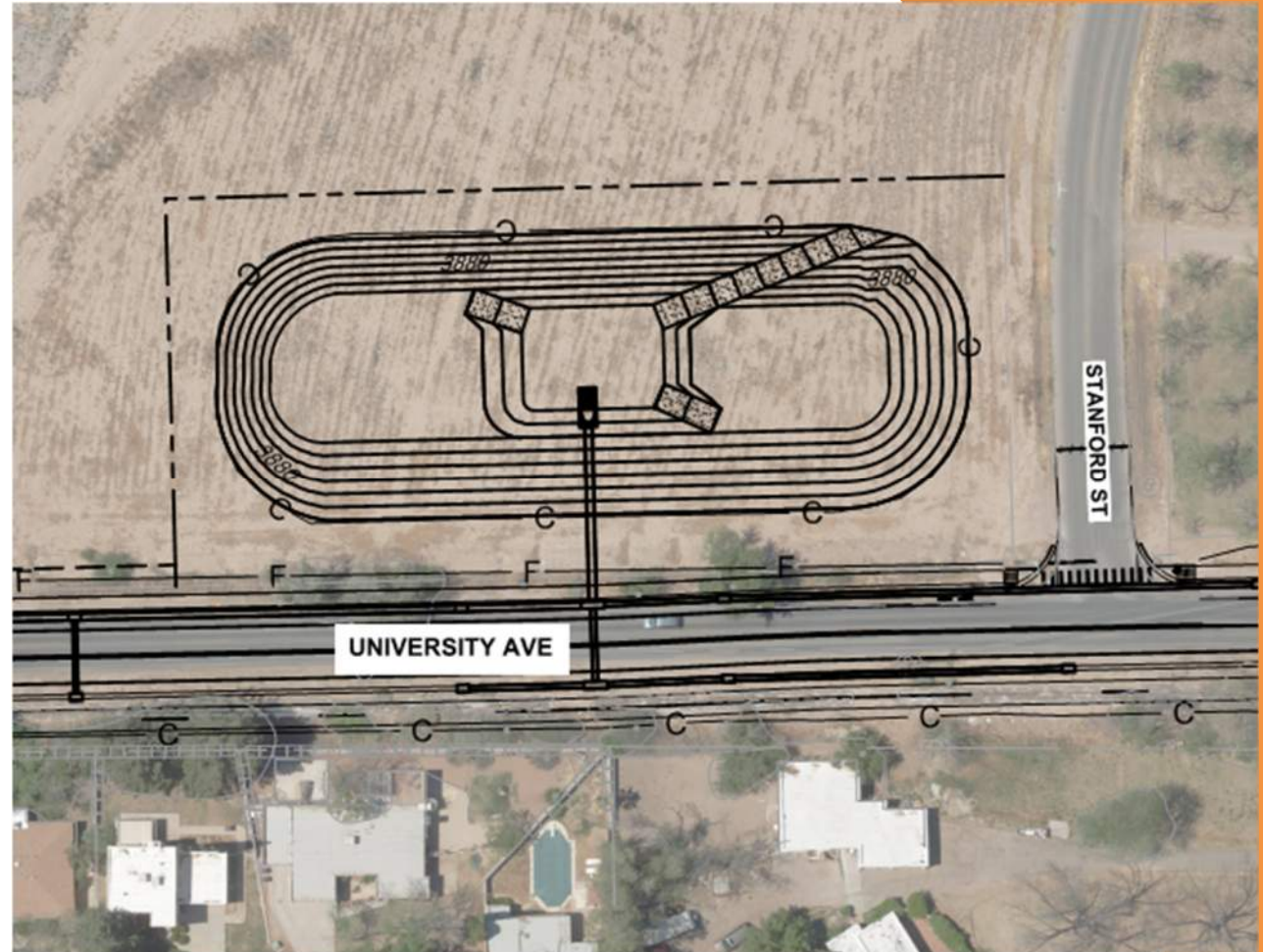
POND W

- ▶ 150' x 270'
- ▶ 0.80 acres
- ▶ 6' depth
- ▶ Perc. Rate:
2.53 min/in



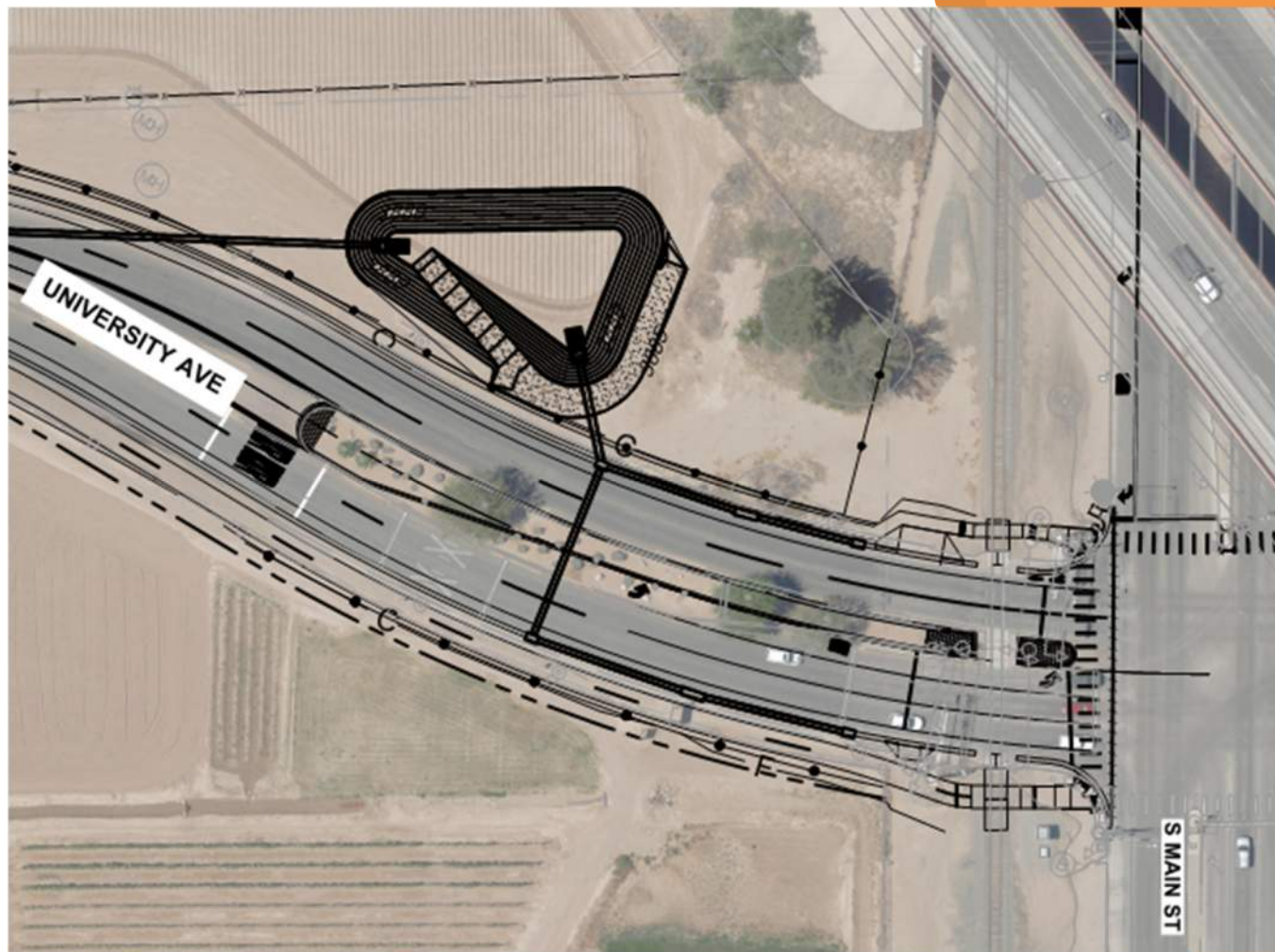
POND E2-A

- ▶ 350' x 130'
- ▶ 0.94 acres
- ▶ 7' depth
- ▶ Perc. Rate:
3.45 min/in



POND E2-B

- ▶ 150' x 100' (at widest points)
- ▶ 0.26 acres
- ▶ 9' depth
- ▶ Perc. Rate: 9.3 min/in

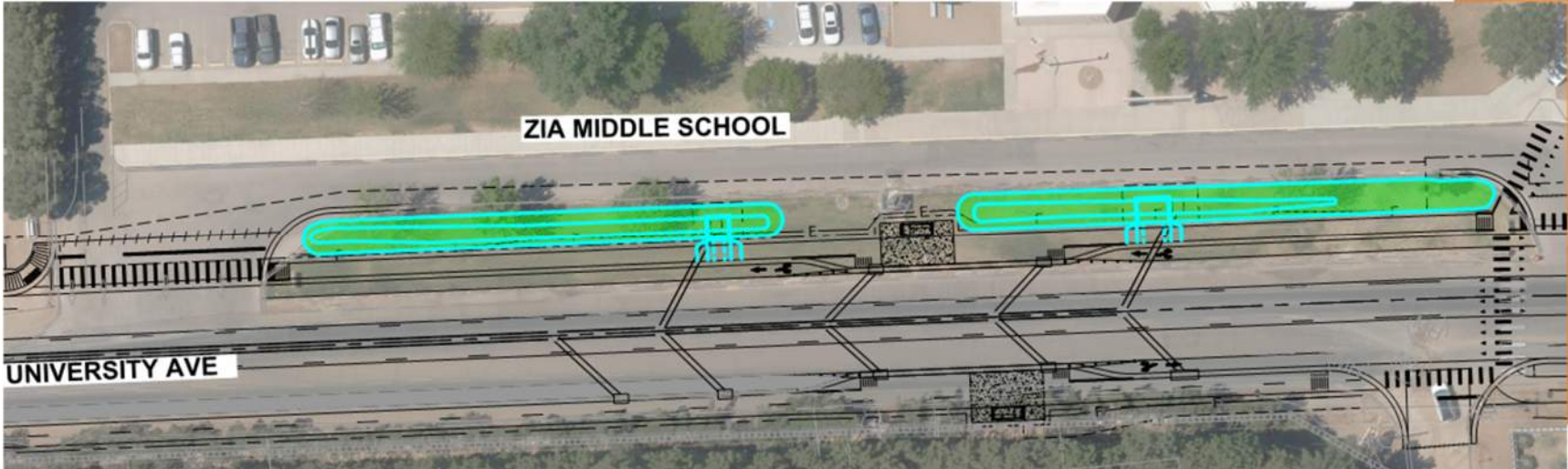
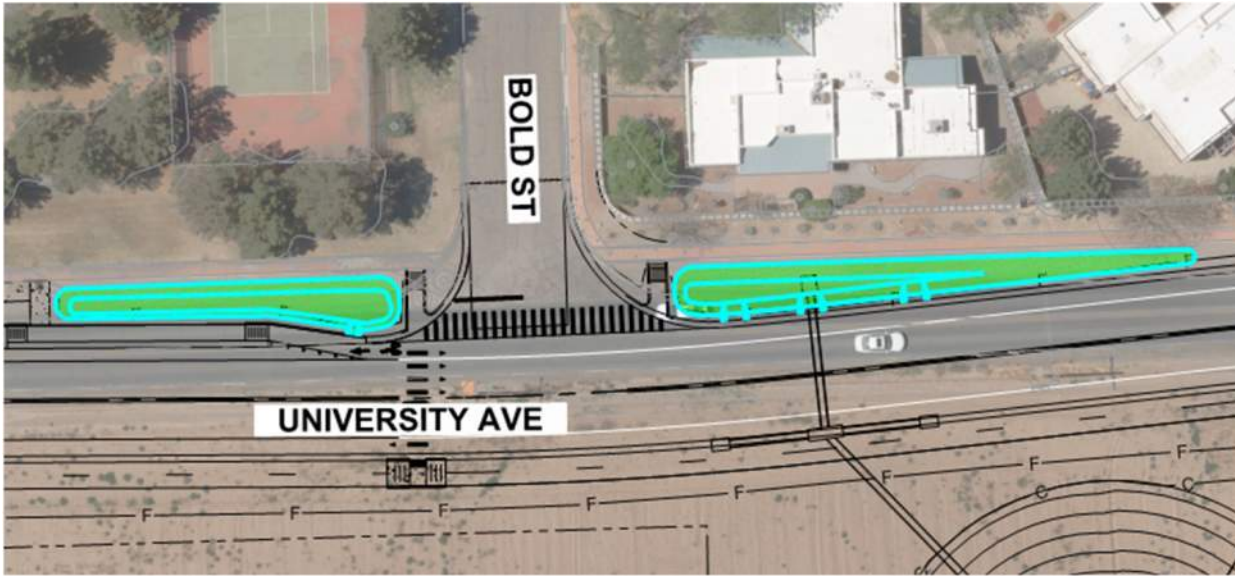


LBO

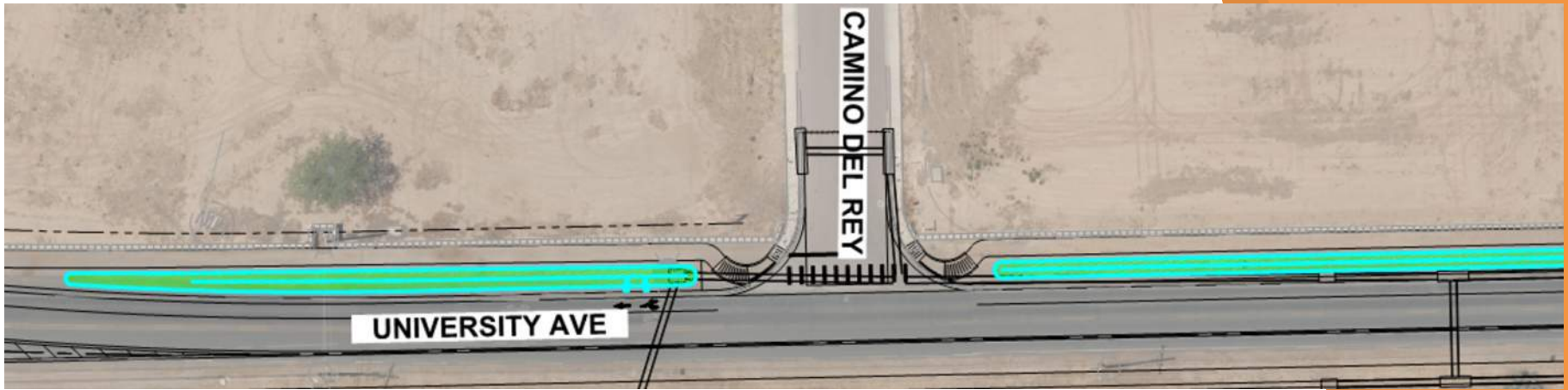
When speaking about the fencing, talk about why this one requires the fence (steep slopes)

Logan Brandenburg, 2022-10-19T17:06:11.850

WATER HARVESTING



WATER HARVESTING



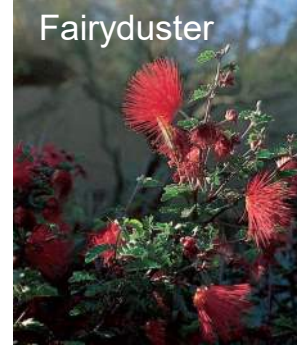
Autumn
Amber
Sumac



Turpentine Bush



Deer Grass



Fairyduster



Thundercloud
Texas Sage



Trailing Indigo Bush



Brakelights Red Yucca



Parry's Beardtongue

INTERSECTION LIGHTING



Google Earth

NM 28 INTERSECTION



LBO

Indicate intersection layout will be the same. And signal operations will be the same

Logan Brandenburg, 2022-10-19T17:09:56.485

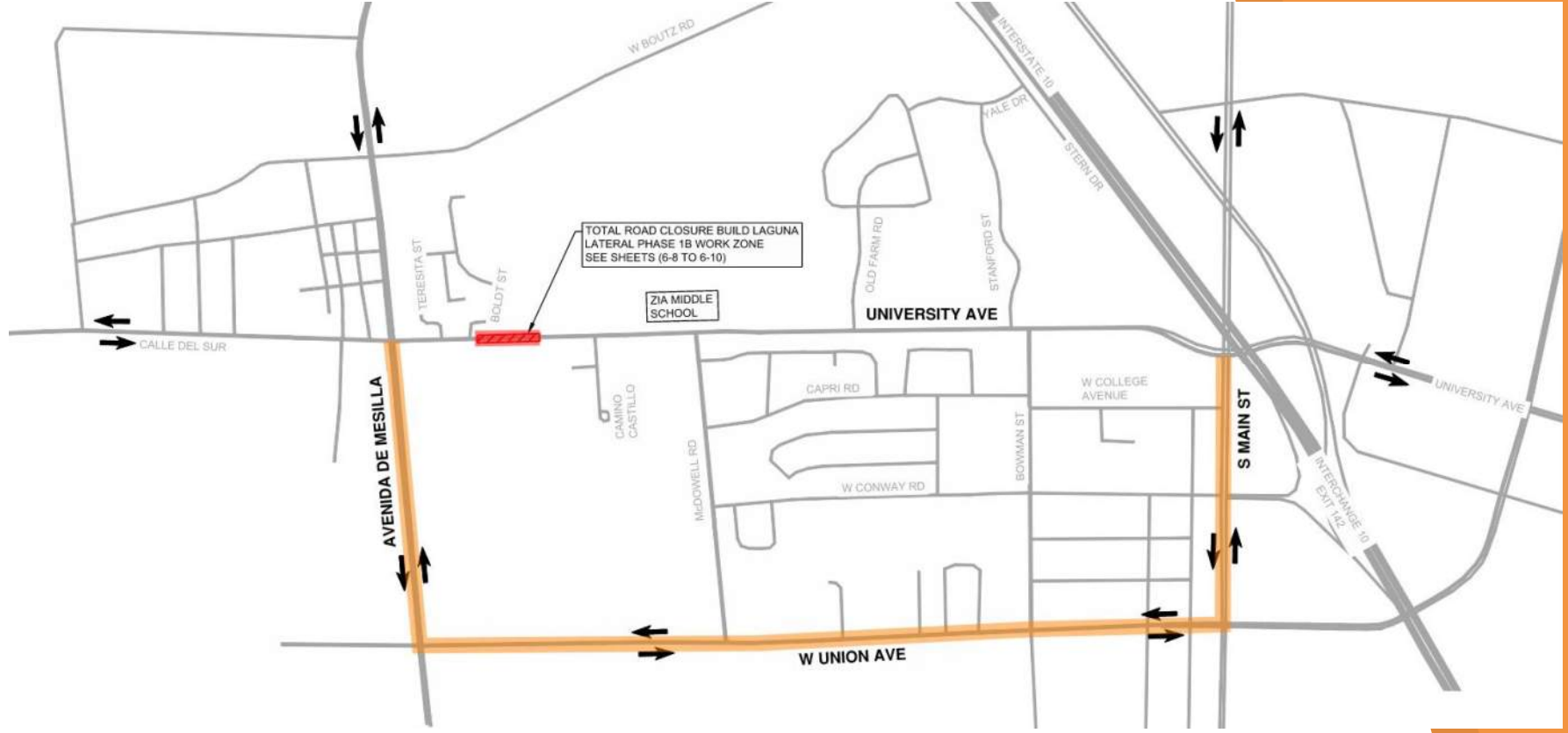
S. MAIN STREET INTERSECTION



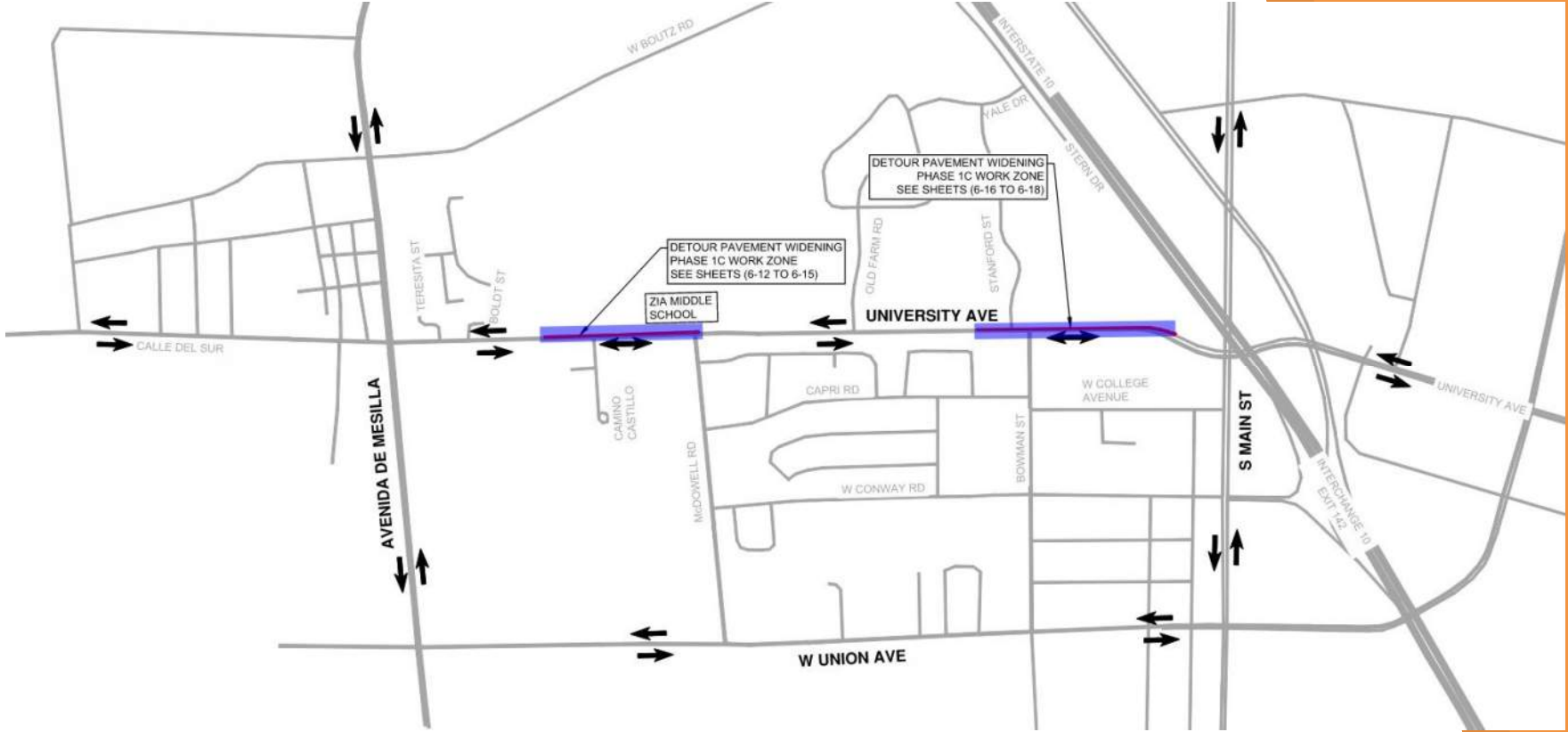
LBO

This intersection to remain the same, but add the southbound right. Signal operations will remain the same, we will add ADA ramps and Crosswalks
Logan Brandenburg, 2022-10-19T17:10:24.838

CONSTRUCTION PHASING & DETOUR PLAN



CONSTRUCTION PHASING & DETOUR PLAN



CONSTRUCTION PHASING & DETOUR PLAN



CONSTRUCTION PHASING & DETOUR PLAN

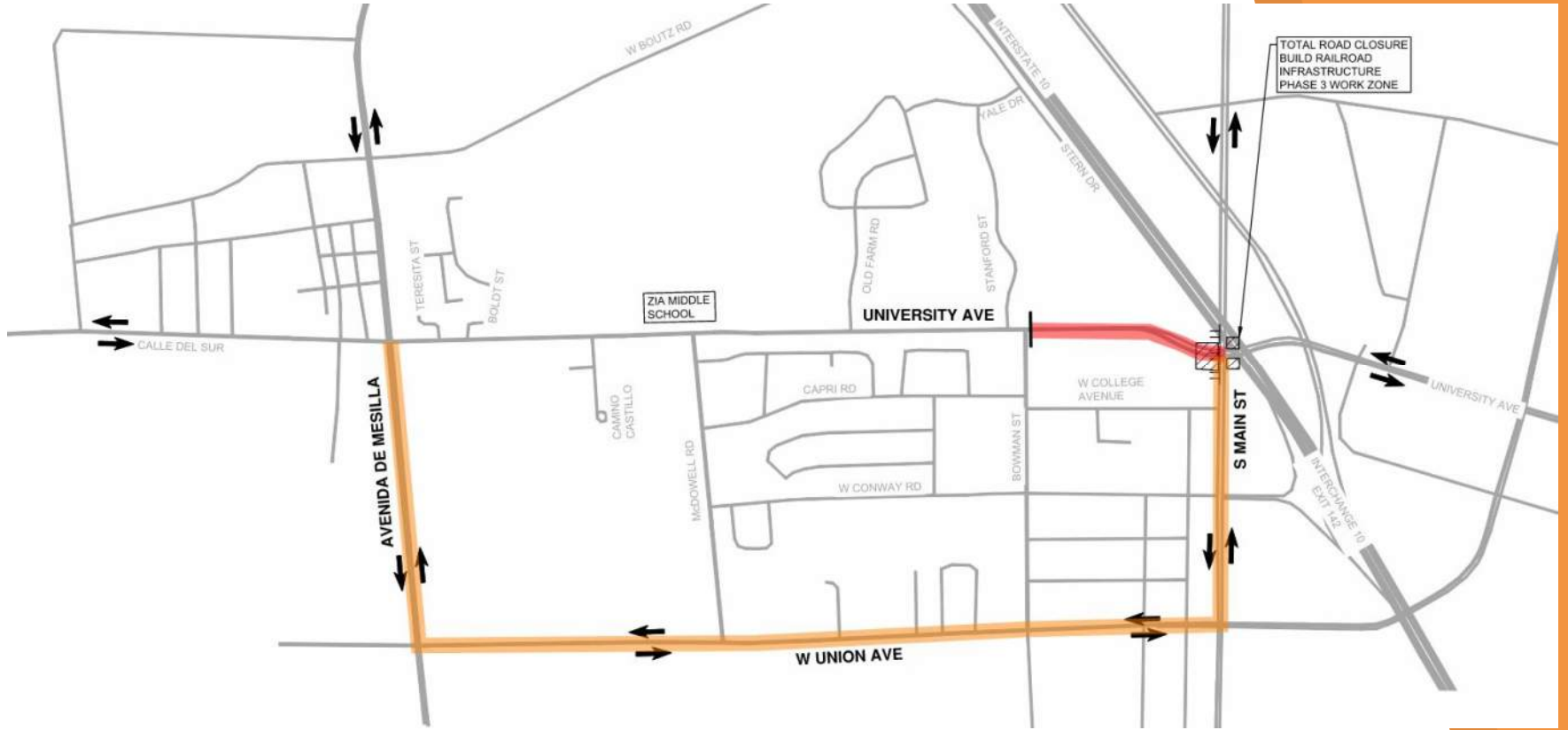


LBO

Indicate that all accesses will be maintained to existing properties on north side of University during construction.

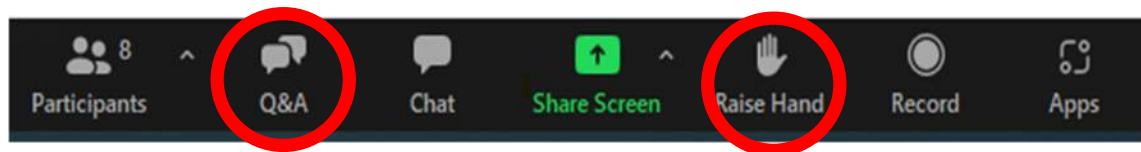
Logan Brandenburg, 2022-10-19T17:12:17.518

CONSTRUCTION PHASING & DETOUR PLAN



QUESTIONS & COMMENTS

- ▶ Type questions via the "Q&A" icon
- ▶ Raise your hand to speak and the host will unmute you
- ▶ Text your question to 505-980-6065, and it will be read out loud
- ▶ We will ask if those on the phone would like to speak



QUESTIONS & COMMENTS

Comments will be accepted at the meeting or can be submitted before November 11, 2022 utilizing the following methods:

- ▶ Online Comment Form:

<https://www.dot.nm.gov/event/university-public-meeting/>

- ▶ Email: mramirez@bhinc.com.

- ▶ Mail: University Ave. Project
C/O Maggie Ramirez, Bohannan Huston
7500 Jefferson St. NE
Albuquerque, NM 87109

- ▶ Phone: (505) 798-7837

LB0

Rather than keep your and Mark's contact info., it may be better to add how to submit comments by phone, mail, email, and online comment form (event page); include a deadline for comments/questions

Logan Brandenburg, 2022-10-12T15:24:35.039

LB1

may need to include a slide with directions on how to share comments via online or by phone

Logan Brandenburg, 2022-10-12T15:24:52.178